

Know how to assess lone work hazards!

WORKING ALONE IS A HAZARD, IN AND OF ITSELF

Because of that, your working alone hazard assessment needs to be well rounded. You'll want to look at workplace hazards over time, and across locations.



Always review...



Take into account past incidents and incidents at similar businesses



Incident reports and other records



Past employee experiences



incidents occurring to other businesses in your industry



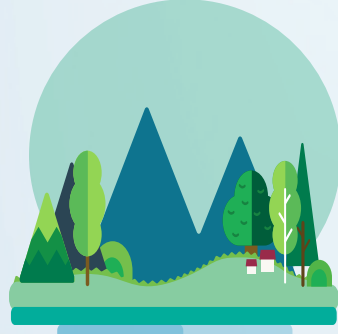
Incident trends related to specific job roles, locations, tasks, times, or dates



Workers' compensation incident reports



Working alone specific police reports



Environmental features



The building layout



Areas with lighting deficiencies



Areas and roles with a lack of telephone or communication device access



Known security problem areas (e.g., parking lots)



Employee training programs



High-risk factors (e.g., being isolated from first aid services)



The effectiveness of your existing safety measures

If your company has limited experience with working alone, they can contact...



Health and safety consultants



Local crime prevention units

Remember, working alone increases the risk of other hazards. Make sure it's accounted for.